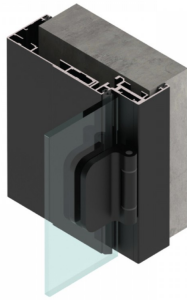
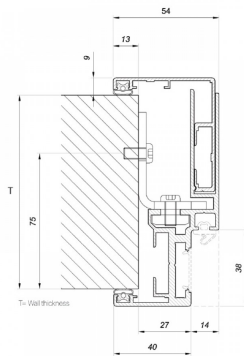




160 - 195mm Stud To Glass Door Frame - Black (Model: G.DK.SG.BK.003)



- This stud/wall to glass door aluminium door frame with integrated hinge & receiver profile is suitable for glass thicknesses of 8-10mm.
- The recommended max door height is 2400mm. Above a height of 2200 mm, it is recommended to use 3 hinges. Suitable when the stud/wall thickness is 160-195mm.
- This profile is designed in this shape to fit securely into a reveal covering opening edge like an architrave. The design creates a rebate for the glass door to reduce both noise and air movement.
- Installing of the hinges requires no drilling or milling and they can be adjusted in seconds which makes this system a favourite for the installer.



Attributes:

Product Code: G.DK.SG.BK.003

Unit Of Sale: 6 Metres