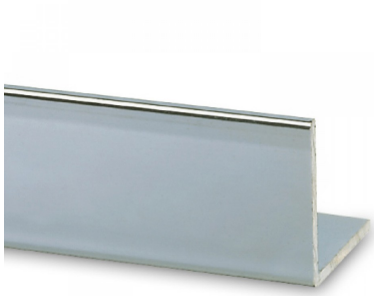




20mm X 20mm Right Angle Profile - Alinox (SS Effect) (Model: G70120257)



Designed for mirror wall installations and other applications.

Angle extrusions can be used as inside and outside corners.

Used for creating bespoke shower enclosures.

Additional shipping costs may occur for shipping long lengths.

The additional charge will be agreed prior to official invoicing or card charging.



Attributes:

Product Code: G70120257

Unit Of Sale: 5 Mtr
