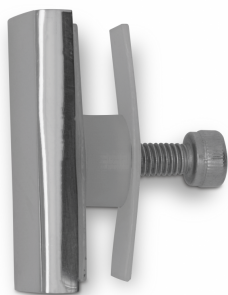


Cascade Rail To Glass Panel End Fixing - SSS (Model: J.CAS013)



- This fitting can be added to the Cascade shower door system on one or both ends to convert the system from a wall to wall system into a wall to glass or a glass to glass system.

- A simple drilled hole in the end fixed panel is all that is required.

Attributes:

Product Code: J.CAS013

Unit Of Sale: Each
