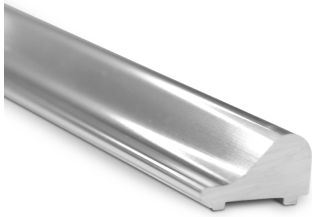




## Shower Door Threshold - Polished Chrome ( Model: JTH-02 )



- Mounted directly below the shower door to let the water drain back into the shower stall.
- Ideal for flat or out-sloping curbs, the rounded low contour of the half round threshold will not harm feet.

### Attributes:

**Product Code:** JTH-02

**Unit Of Sale:** 2.49 Mtr

