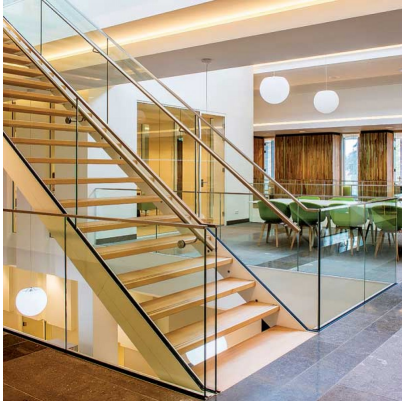




## On Level 3031 Side Mount Channel ( Model: K.ON.10.3031.002.11 )



- Slimline, elegant design and low maintenance.
- For glass thicknesses of 21.52mm to 31.52mm.
- For internal and external use.
- Suitable for commercial and public use that require line load levels up to 1.5kN.
- Non-stock item. Shipped direct from Manufacturer. Delivery usually 3-7 days.

### Attributes:

**Product Code:** K.ON.10.3031.002.11

**Unit Of Sale:** 2.5 Mtr

