



## Hydraulic Bottom Patch Door Kit Incl. Top Patch & Pivot - SS ( Model: KDKIT001 )



- The hydraulic patch fitting on the bottom is ideal for use where raised access floors are in use or where a door closing solution is needed but digging out for a floor spring is not suitable.
- This new kit includes the bottom hydraulic patch fitting and mounting plate, the top patch fitting to match and top pivot.
- Easy installation with base seat adjustable: +3mm backward and forward, +3mm left and right and 4 degree alignment adjustment.
- This hydraulic patch fitting complies with EN1154 unlike some others on the market.
- Hold open at 90°



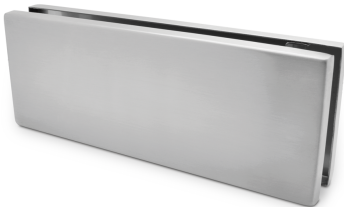
### Specification

- Door Width: 750mm - 1000mm
- Glass Thickness: 8 - 12mm
- Max Door Weight: 100kg
- Finish: Satin Stainless Steel



### Kit Parts

- Top Pivot - K9124
- Top Patch - KGT20SS-PLUS
- Bottom Patch - KGT10SS-AUTO100



### Attributes:

Product Code: KDKIT001

Unit Of Sale: Kit

