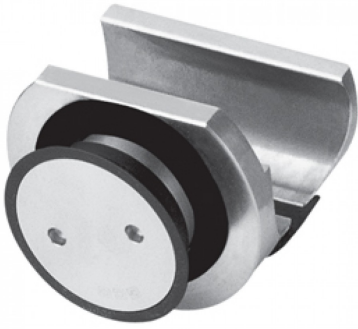




Sliding Door Rail Holder To Glass - Countersunk Type (Model: KGSD151C)

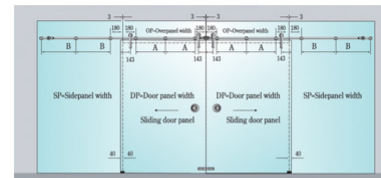
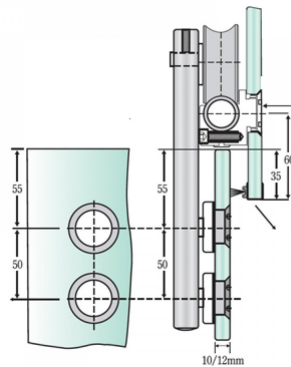
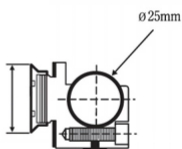
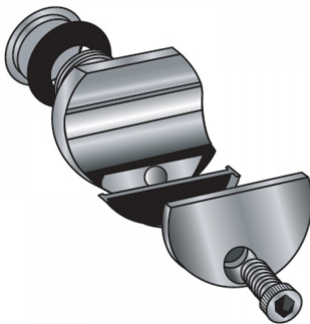
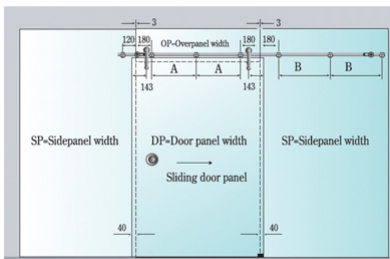


- Suitable for mounting the sliding door rail on to glass fixed panels.
- Suitable for 10mm to 12mm thick glass.
- The countersunk option means that the fitting finishes flush with the glass surface.

Attributes:

Product Code: KGSD151C

Unit Of Sale: Each



$$A=[OP-(180+180)]-2$$

$$B=[SP-(180+180)]-2$$

OP=Overpanel width

SP=Sidepanel width

DP=Door panel width