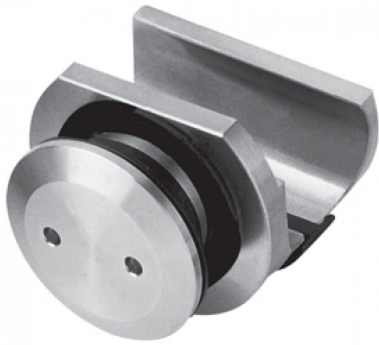




## Sliding Door Rail Holder To Glass - Flat Hole ( Model: KGSD151F )

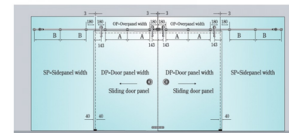
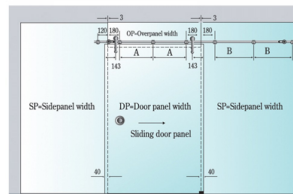
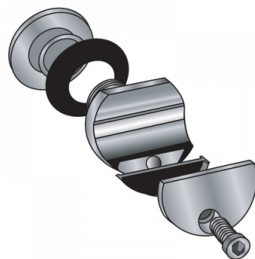
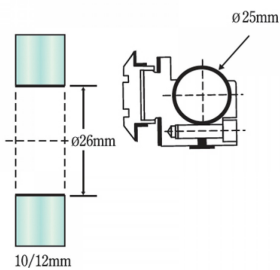
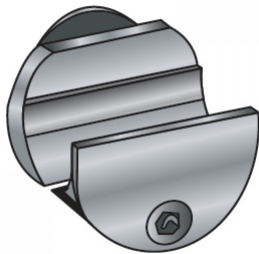
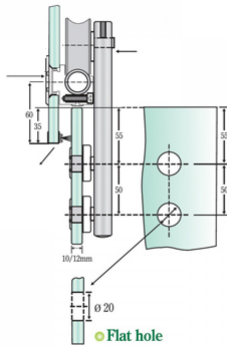


- Suitable for mounting the sliding door rail on to glass fixed panels.
- Suitable for 10mm to 12mm thick glass.
- The countersunk option means that the fitting finishes flush with the glass surface.

### Attributes:

**Product Code:** KGSD151F

**Unit Of Sale:** Each



$$A = [(OP - (180 + 180)) - 2]$$

$$B = [(SP - (180 + 180)) - 2]$$

OP=Overpanel width  
SP=Sidepanel width  
DP=Door panel width