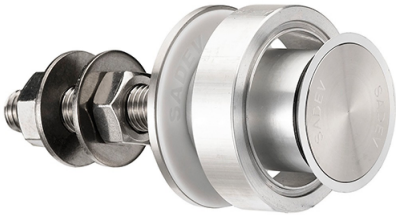




Countersunk Head Articulated Bolt For Insulated Glass Units (Model: KSP.R1001A-V-1465)

These items are not held in stock and will require approximately 1-2 weeks delivery time

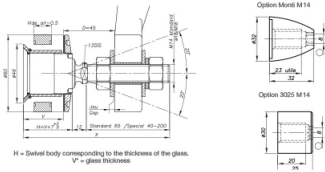


Attributes:

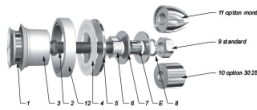
Product Code: KSP.R1001A-V-1465

Unit Of Sale: Each

Dimensions

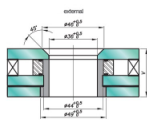


Components



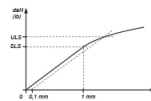
MARK	QUANTITY	DESCRIPTION	MATERIAL
1	1	Detail Body	X2 Cr Ni Mo 17.12.2 as per EN 10088-3
2	1	Threaded Nut	A2 Cr Ni Mo 16.5.1 as per EN 12098-3
3	1	Glass Plug (optional)	AW 10504 as per EN 573-3/4/5/6/8
4	1	Contact washer	White epoxy/white neoprene
5	1	Glass nut (SR)	X2 Cr Ni Mo 17.12.2 as per EN 10088-3
6	1	Nut DIN 934	A4
7	2	Washer	A4
8	1	Lock washer DIN 127	A4
9	1	Nut DIN 934	A4
10	1	3025 Contact - Option	X2 Cr Ni Mo 17.12.2 as per EN 10088-3
11	1	Model cap-nut - Option	X2 Cr Ni Mo 17.12.2 as per EN 10088-3
12	1	Spacing ring	AlCuMgSi0.017% (AL6063) as per EN 573-3

Glass Drilling



It is required to provide the following information with each request: The glass composition (ex. 10 mm annealed, 8.8.4 tempered, 8.8.2-10-10 insulating) / the length and diameter of the threaded hole if not standard dimension (M14, 05 mm) / the reference of the spider to be used as support, or the thickness of an existing support for the delivery of the spider.

Mechanical Performance



Model	Standing capacity		Pull out capacity	
	Ø	ULS*	Ø	ULS*
M14	65mm	344 daN (773 lb)	377 daN (1207 lb)	16.2"
M16	80mm	153 daN (343 lb)	344 daN (819 lb)	2000 daN
	85mm	304 daN (1120 lb)	827 daN (1859 lb)	14496 lb
M18	90mm	304 daN (1120 lb)	325 daN (1105 lb)	
	95mm	304 daN (1120 lb)	325 daN (1105 lb)	

*ULS - Serviceability Limit State - load at first deformation
*ULS - Ultimate Limit State - load at ultimate limit (Fig. 1)
Values are given without factor of safety.