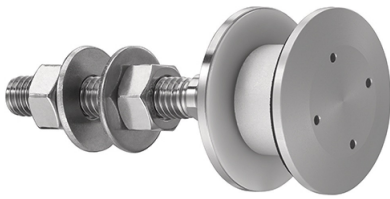




Flat Head Articulated Bolt For 8 - 15mm Insulated Glass Unit (Model: KSP.R1039-0815-1465)

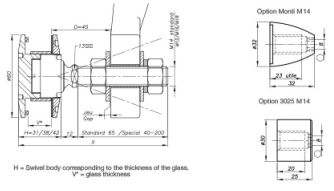
These items are not held in stock and will require approximately 1-2 weeks delivery time



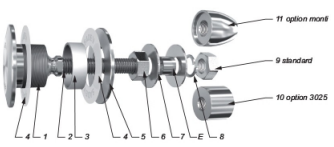
Attributes:

Product Code: KSP.R1039-0815-1465
Unit Of Sale: Each

Dimensions

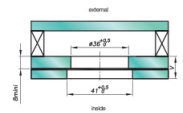


Components



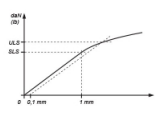
Item	Quantity	Description	Material
1	1	Delnet body	X2 CR Ni Mo 17.12.2 as per EN 10088-5
2	1	Thimble tube	X2 CR Ni Mo 16.5.1 as per EN 10088-5
3	1	Glass hole grommet	AW 30004 as per EN 12753-3-010-01-01
4	2	Contact washer	White polypropylene/white polyethylene
5	1	Glass hole O-ring	X2 CR Ni Mo 17.12.2 as per EN 10088-5
6	1	Nut CR 304	A4
7	2	Spacer	A4
8	1	Lock washer CR 127	A4
9	1	Nut CR 304	A4
10	1	3025 Cap-nut - Option	X2 CR Ni Mo 17.12.2 as per EN 10088-5
11	1	M14 cap-nut - Option	X2 CR Ni Mo 17.12.2 as per EN 10088-5

Glass Drilling



It is important to provide the following information with each request: The glass composition (es. 10 mm annealed, 8 & 4 laminated, 8 & 2-10-10 laminated) / the length and diameter of the threaded part of the standard dimension (M14, 05 mm) / the reference of the spider to be used as support, or the thickness of an existing support for the delivery of the option.

Mechanical Performance



Standing capacity	Pull out capacity	
	Ø	16.5"
M14	85mm 344 daN (773 lb)	377 daN (1207 lb)
M14	90mm 353 daN (793 lb)	384 daN (859 lb)
M14	95mm 364 daN (810 lb)	2000 daN
M14	100mm 364 daN (810 lb)	327 daN (1809 lb)
M14	105mm 353 daN (793 lb)	325 daN (1105 lb)

*UL5 - Serviceability Limit State - load at first deformation
*UL5 - Ultimate Limit State - load at ultimate limit (Fig. 1).
Values are given without factor of safety.