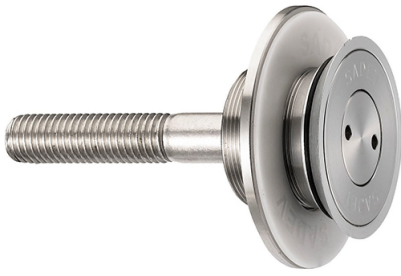




Countersunk Fixed Bolt For 15 - 22mm Thick Glass (Outside Fi (Model: KSP.V2002-1522-1266)

These items are not held in stock and will require approximately 1-2 weeks delivery time

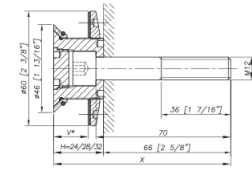


Attributes:

Product Code: KSP.V2002-1522-1266

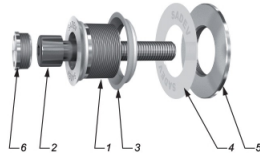
Unit Of Sale: Each

Dimensions



H= Sanket body corresponding to the thickness of the glass.
V= glass thickness.

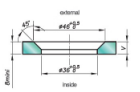
Components



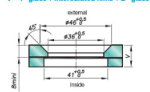
MARK	QUANTITY	DESCRIPTION	MATERIAL
1	1	Body	X2 CrNiMo 17.12.2 as per EN 10088-5
2	1	Ball (EN1212-75)	A4
3	1	Glass hole grommet	AW 10556 as per EN 675.3 / AW 66.6
4	1	Control washer	White epoxy / white epoxythane
5	1	Glass nut Ø 80	X2 CrNiMo 17.12.2 as per EN 10088-5
6	1	Clear cap	X2 CrNiMo 17.12.2 as per EN 10088-5

Glass Drilling

Monolithic glass



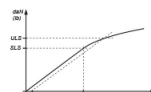
Laminated glass V = 1" glass + intercalated film + 2" glass



Available for glass thicknesses from 6 to 31.5mm, for other thicknesses please contact us.

It is required to provide the following information with each request: the glass composition (ex. 10mm monolithic, 6+6 laminated, 6+6+2+10 laminated) / the length and diameter of the intended hole if not standard dimensions (M14, 60 diam) / the reference of the supplier to be used as support, or the thickness of an existing support for the safety of the spacer.

Mechanical Performance



After strength	Pull out capacity
4.52*	4.52*
4342 daN* (9761 lb)	3709 daN (8338 lb)

*ULS - Ultimate Limit State / load at the elastic limit (F_{yk})
Values are given without factor of safety

*Min: Tensile strength calculation according to EN 1993-1-8
and shear strength calculation according to EN 1993-1-4