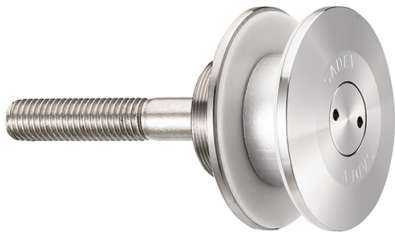




60mm Dia. Flat Head Fixed Bolt For 22 - 26mm Thick Glass (Ou (Model: KSP.V2004-2226-1266)

These items are not held in stock and will require approximately 1-2 weeks delivery time

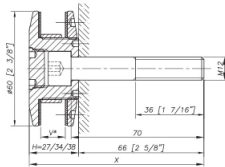


Attributes:

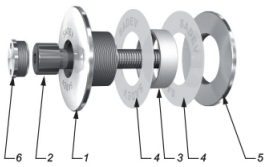
Product Code: KSP.V2004-2226-1266

Unit Of Sale: Each

Dimensions



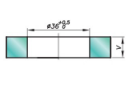
Components



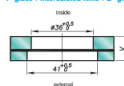
MARK	QUANTITY	DESCRIPTION	REFERENCE
1	1	Bolt	XO D No. 17.12.2 as per EN 10983
2	1	Hex DN612 M12-70	A4
3	1	Glass hole grommet	AW 10024 as per EN 5753 / AW 2116
4	2	Contact washer	White polyamide / white polyethylene
5	1	Glass nut B10	XO D No. 17.12.2 as per EN 10983
6	1	Cover cap	XO D No. 17.12.2 as per EN 10983

Glass Drilling

Monolithic glass



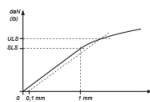
Laminated glass V = 1st glass + intercalated frame + 2nd glass



Available for glass thicknesses from 8 to 31.52mm, for other thicknesses please contact us.

It is important to provide the following information with each request: the glass composition (ex. 10mm monolithic, 6.6.4 laminated, 6.6.2-10-10 laminated), the length and diameter of the threaded hole (see technical dimensions (M14, 60mm)) / the reference of the spigot to be used as support, or the thickness of an existing support for the delivery of the spacer.

Mechanical Performance



	Clear strength	Full out capacity
M12	4342 daN (9761 lb)	3709 daN (8338 lb)

*ULS - Ultimate Limit State: based on the elastic limit (EN 1) Values are given without factor of safety
*Yield Transfer strength calculation according to EN 1993-1-8 and shear strength calculation according to EN 1993-1-4