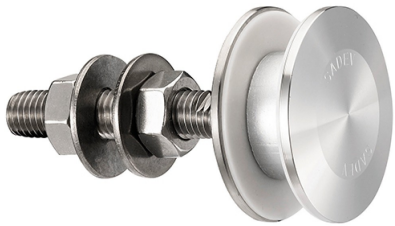




60mm Dia. Flat Head Fixed Bolt For 8 - 15mm Thick Glass (Model: KSP.V2005-0815-1266)

These items are not held in stock and will require approximately 1-2 weeks delivery time

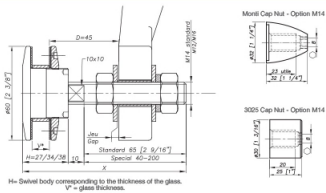


Attributes:

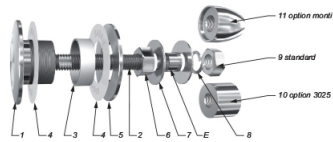
Product Code: KSP.V2005-0815-1266

Unit Of Sale: Each

Dimensions



Components



MARK	QUANTITY	DESCRIPTION	MATERIAL
1	1	Body	30 Cr Ni Mo 17.12.2 as per EN 10088-3
2	1	Thimble/wash	Al
3	1	Glass hole general	AW 1050A as per EN 573-3 / AS 6633
4	2	Conical washer	White anodized / white phosphated
5	1	Glass nut 01 00	30 Cr Ni Mo 17.12.2 as per EN 10088-3
6	1	Nut DIN 934	Al
7	2	Washer	Al
8	1	Lock-washer 027	Al
9	1	Nut DIN 934	Al
10	1	3025 Cap Nut - Option	30 Cr Ni Mo 17.12.2 as per EN 10088-3
11	1	Morel Cap Nut - Option	30 Cr Ni Mo 17.12.2 as per EN 10088-3

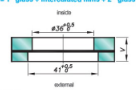
Glass Drilling

Monolithic glass



Laminated glass

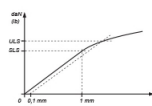
V = 1st glass + intercalated film + 2nd glass



Available for glass thicknesses from 8 to 31.52 mm, for other thicknesses please contact us.

It is important to provide the following information with each request: the glass composition (ex.: 10mm monolithic, 8.8.4 laminated, 8.8.2-10-10 laminated), the length and diameter of the threaded hole and its directional dimensions (M14, 60mm) / the reference of the spider to be used as support, or the thickness of an existing support for the delivery of the spider.

Mechanical Performance



D	Bearing capacity		ULS ¹	ULS ²
	ULS ¹	ULS ²		
M12	137 daN (308 lb)	260 daN (584 lb)		
60 mm	85 daN (190 lb)	147 daN (330 lb)		
M14	217 daN (492 lb)	534 daN (1200 lb)	638 daN	
60 mm	144 daN (325 lb)	313 daN (703 lb)		1148 daN

¹ULS: Steadily Loaded State - Load at 1mm deflection
²ULS: Ultimate Limit State - Load at the ultimate limit (90%)
Values are given without factor of safety