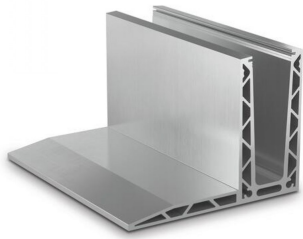
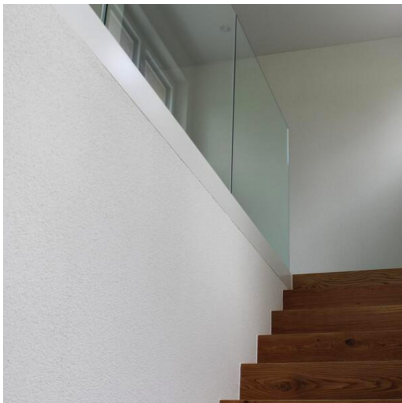




OnLevel 3020 F Type Top Mount Channel - 0.74kN (Model: K.ON.10.3020.005.11)



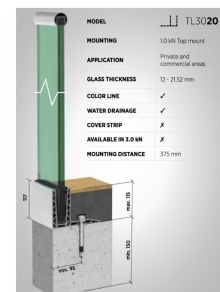
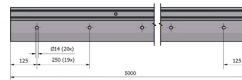
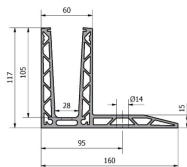
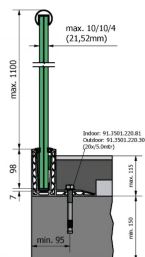
- Suitable for line loads up to 0.74kN in accordance with BS6180.
- Using the Flex-Fit System, the installation can be done from one side only and glass adjusted accordingly.
- Pre drilled every 250mm and suitable for an M12 fixing.
- Supplied in plain anodised aluminium in 5 metre lengths.
- Non-stock item. Shipped direct from Manufacturer. Delivery usually 3-7 days.
- 3020 Profile is a 'project only' system. Minimum order quantities of 50m.



Attributes:

Product Code: K.ON.10.3020.005.11

Unit Of Sale: 5 Mtrs



MODEL	TL3020
MOUNTING	1.0 kN Top mount
APPLICATION	Private and commercial areas
GLASS THICKNESS	12 - 25.52 mm
COLOR LINE	✓
WATER DRAINAGE	✓
COVER STRIP	✓
AVAILABLE IN 3.0 M	✓
MOUNTING DISTANCE	175 mm