



## OnLevel 4010 Surface Mount Balustrade & Wind Breaker ( Model: K.ON.10.4010.005.11 )



- Suitable for line loads up to 1.5 kN for a building height of 1297 mm.

- Using the Flex-Fit System, the installation can be done from one side only and glass adjusted accordingly.

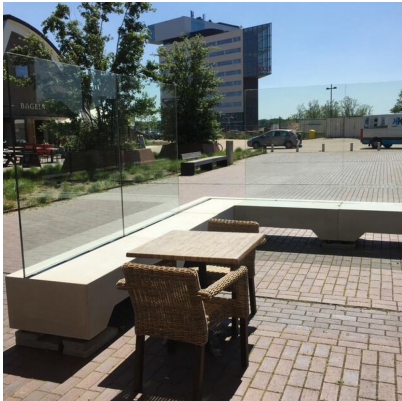
- Pre drilled every 200mm and suitable for an M10 if fixing to steel and M12 for wood fixing.

- Suitable for 12-21.52mm glass.

- Top Cover is optional.

- Supplied in plain anodised aluminium in 5 metre lengths.

- Non-stock item. Shipped direct from Manufacturer. Delivery usually 3-7 days.



### Attributes:

**Product Code:** K.ON.10.4010.005.11

**Unit Of Sale:** 5 Mtrs

