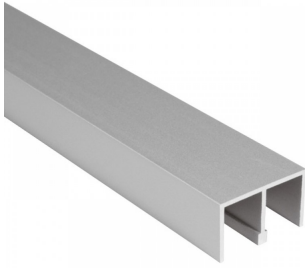




Alum. Sliding Track - Top - Non Flocked - 6-8mm Thick Glass (Model: G0046B)



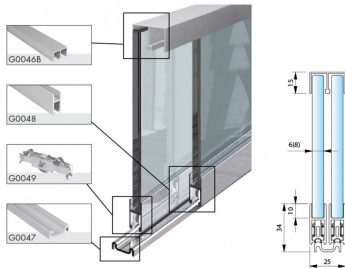
- Glass thickness: 6- 8mm.
- Upper double - guide, not drilled, non-flocked.
- Virtually tool free installation.
- Optional Antilift & Anti Rattle system please select from related products below G0061A, G0061B, G0061.

Attributes:

Product Code: G0046B

Unit Of Sale: 2.5 mtr

Sliding Door System for 6-8 mm glass



Technical specifications: Maximum load per wheel
2 x G0049 = approx. 25 kg / 4 x G0049 = approx. 50 kg
Glass Calculation:
Glass Door Height = Installation Height less 21 mm (when used with 8mm Glass)
or less 20mm (when used with 6mm Glass)
Door Glass Width = Installation Width divided by 2, plus 17mm.

