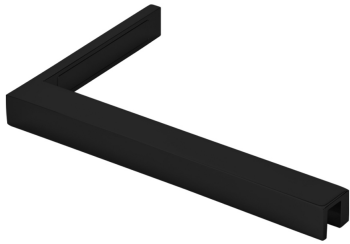




Shower Fixed Panel Support - 8-10mm Glass - Left - Black (Model: JRB.C500L.MB)



- Installed seamlessly at the glass top of your shower enclosure, Shower Fixed Panel Support adds both support and style to your bathroom design.

- Finish: Matte Black
- Material: Stainless steel 304
- Glass thickness: 8-10mm
- Invisible screw
- Magnetic cover plate
- For fixed panel widths from 220 ‰ 380 mm

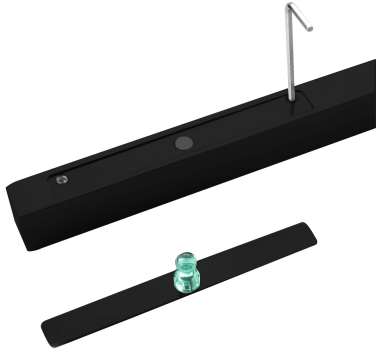
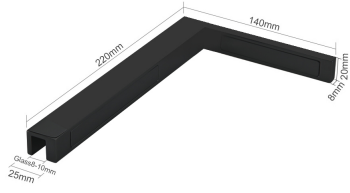


Attributes:

Product Code: JRB.C500L.MB

Unit Of Sale: Each





Thickness: 25mm

Thickness: 20mm

Thickness: 8mm

