

Wall Mount Shower Hinge - Polished Chrome (Model: JGX992.1PC)



• TO BE DISCONTINUED - LOW STOCK - CHECK BEFORE ORDERING. ALTERNATIVE SEE SHANNON RANGE

• Glass Thickness: 10mm or 12mm tempered safety glass.

• Max. Door Weight: Using 2 hinges for 37kg, 3 hinges for 55kg.

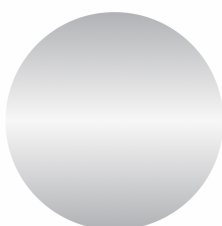
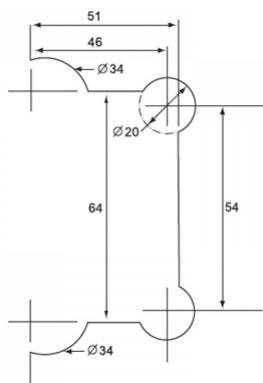
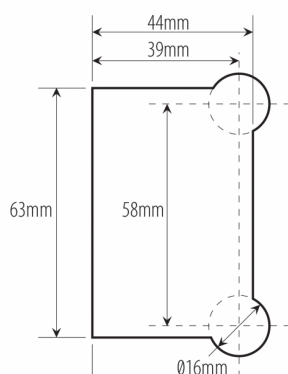
• Max. Door Width: 2 hinges for 800mm, 3 hinges for 900mm.

• Complete with gaskets, stainless steel screws & wall plugs.

Attributes:

Product Code: JGX992.1PC

Unit Of Sale: 1 Hinge



POLISHED CHROME FINISH