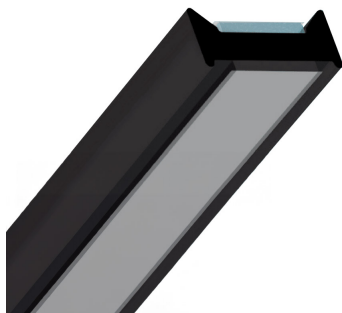


180 Degree - 10mm - Black Glass To Glass Abutment Joint (Model: JP10EZCE-180-BL)



- Suitable for standard and laminated glass types.
- Accommodates glass thicknesses of 10mm.
- Supplied with self adhesive tape and removable dust shield.
- Dual function as a corner section.

Attributes:

Product Code: JP10EZCE-180-BL

Unit Of Sale: 3 Metre

