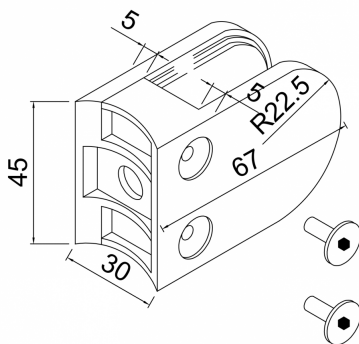
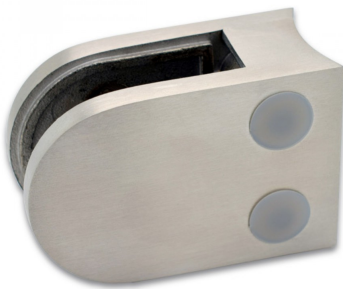


Glass Clamp - 63x45mm - 316SSS - Satin - 60mm Tube - 6-12mm (Model: K.GC.6345.316.060.S)



- A 63mm x 45mm D shaped clamp. Suitable for mounting to a 60mm diameter post.
- Used mainly indoors for stairs, glass balconies, counter dividers, retail glass displays and splash guards.
- Supplied with an optional anti-slip safety pin which allows you to drill the glass to ensure that it never slips downwards over time.
- These clamps are suitable for loads up to approximately 34kgs per four clamps.

Attributes:

Product Code: K.GC.6345.316.060.S

Unit Of Sale: each

