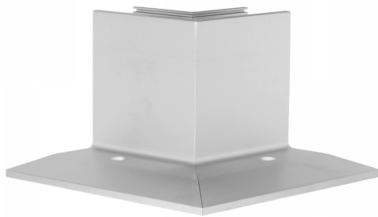


OnLevel 3010 F Type 90 Degree Internal Corner ( Model: K.ON.10.3010.300.11 )

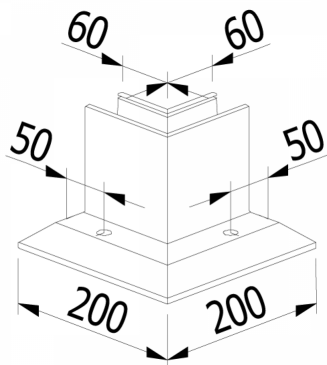


- Suitable for line loads up to 3kN in accordance with BS6180.

- Using the Flex-Fit System, the installation can be done from one side only and glass adjusted accordingly.

- Pre drilled every 300mm and suitable for an M16 fixing.

- Supplied in plain anodised aluminium in 2.5 metre lengths.



Attributes:

**Product Code:** K.ON.10.3010.300.11

**Unit Of Sale:** Each