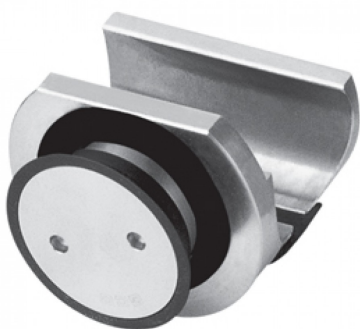


Sliding Door Rail Holder To Glass - Countersunk Type (Model: KGSD151C)

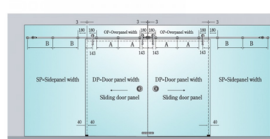
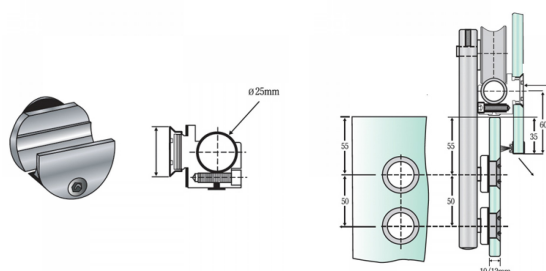
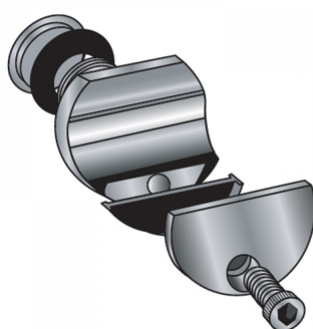
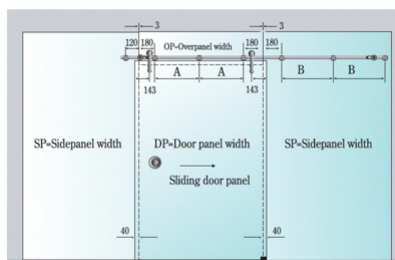


- Suitable for mounting the sliding door rail on to glass fixed panels.
- Suitable for 10mm to 12mm thick glass.
- The countersunk option means that the fitting finishes flush with the glass surface.

Attributes:

Product Code: KGSD151C

Unit Of Sale: Each



$$A = [(OP - (180 + 180)) - 2]$$

$$B = [(SP - (180 + 180)) - 2]$$

OP=Overpanel width
SP=Sidepanel width
DP=Door panel width